



**Manual on how to build the Eco Friendly
Vanbrugh House**

Vanbrugh's Green Credentials

No other Company has done as much as Vanbrugh Construction in trying to preserve the Earth's Environment –

1. Houses built on Flood Plains.

- Traditional Brick or Concrete Based Houses cannot be built on Flood Plains, or where they are at risk of being inundated by Sea Water. Vanbrugh Houses can.

2. Resistant to damage by High Winds

- Higher Surface Temperatures around the World seems to have been creating more and more High Wind Conditions including Hurricanes. The Vanbrugh Houses are inherently proof against these High Winds. This makes are Houses suitable to be built on Coastal Areas.

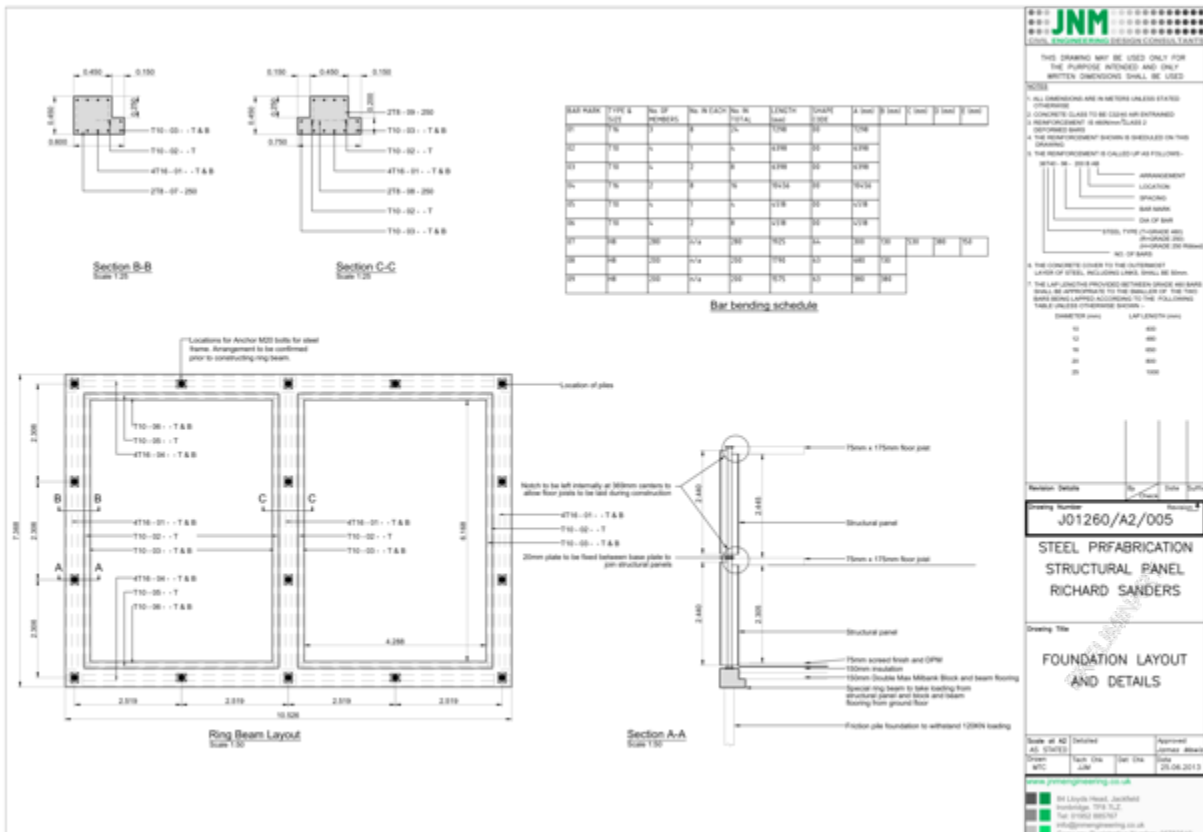
How to build a Vanbrugh House in easy stages

Manual on how to erect them in 6 easy stages. All you need is 2 Unskilled Workers with Spanners.

1. Build your Foundations.
 - a) These could be Screw Pile Foundations



b) These could be Concrete Strip Foundations



2. Erect your 1st Wall Panel, bolting it to the Foundations.



3. Erect your 2nd Wall Panel, bolting it to the Foundations, and Bolting it to the 1st Panel.



4. Erect the rest of the Wall Panels, bolting them to the Foundations, and Bolting them to the other Panels.



5. Erect the upper Wall Panels, bolting them to the Ground Floor Panels , and Bolting them together.



6. Your House Kit is now fully assembled.



7. Fit the external Cladding.

Render Board.



Brick Veneer. This can be purchased in Sheets of 20mm thick Bricks. They are supplied in a huge range of styles from Rustic Design, through to modern Bricks. See Ibstock Bricks for a wide range.



8. Fit the Roof. This is normally cheaper to purchase it locally. The Finish can be –

Tiled – Clay or Concrete

Slate

Metal Sheeting – Aluminium Cladding, Steel Cladding

Natural Material such as Wheat Stalks

9. Fit the Doors and Windows. The openings have been already provided for in the Wall Panels. The Door/Window Frames are simply screwed to the Wall Openings. These are normally cheaper to purchase locally.



10. Fit the Internal Finishings such as Floors, Staircases, Plasterboard, Electrics, Plumbing etc. All this would be carried out by local Sub-Contractors.



Your House is now complete - ready for you to move in !



These are a Pair of 3 Bedroom Houses we built in Wolverhampton.

They have both been Mortgaged with High Street Lenders.

The Houses are so well insulated that the Tenants do not use the Central Heating, and even open the Windows in the middle of Winter !